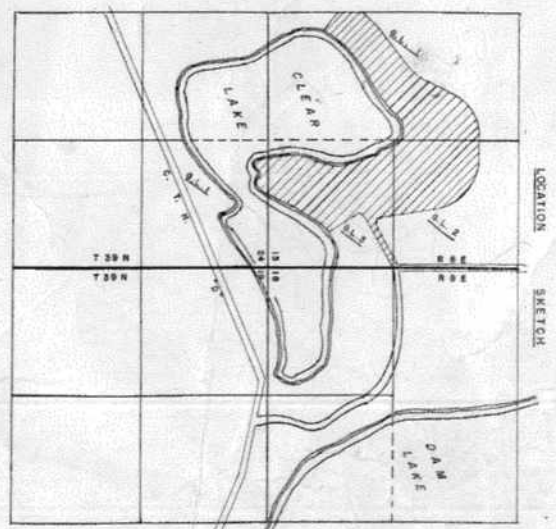
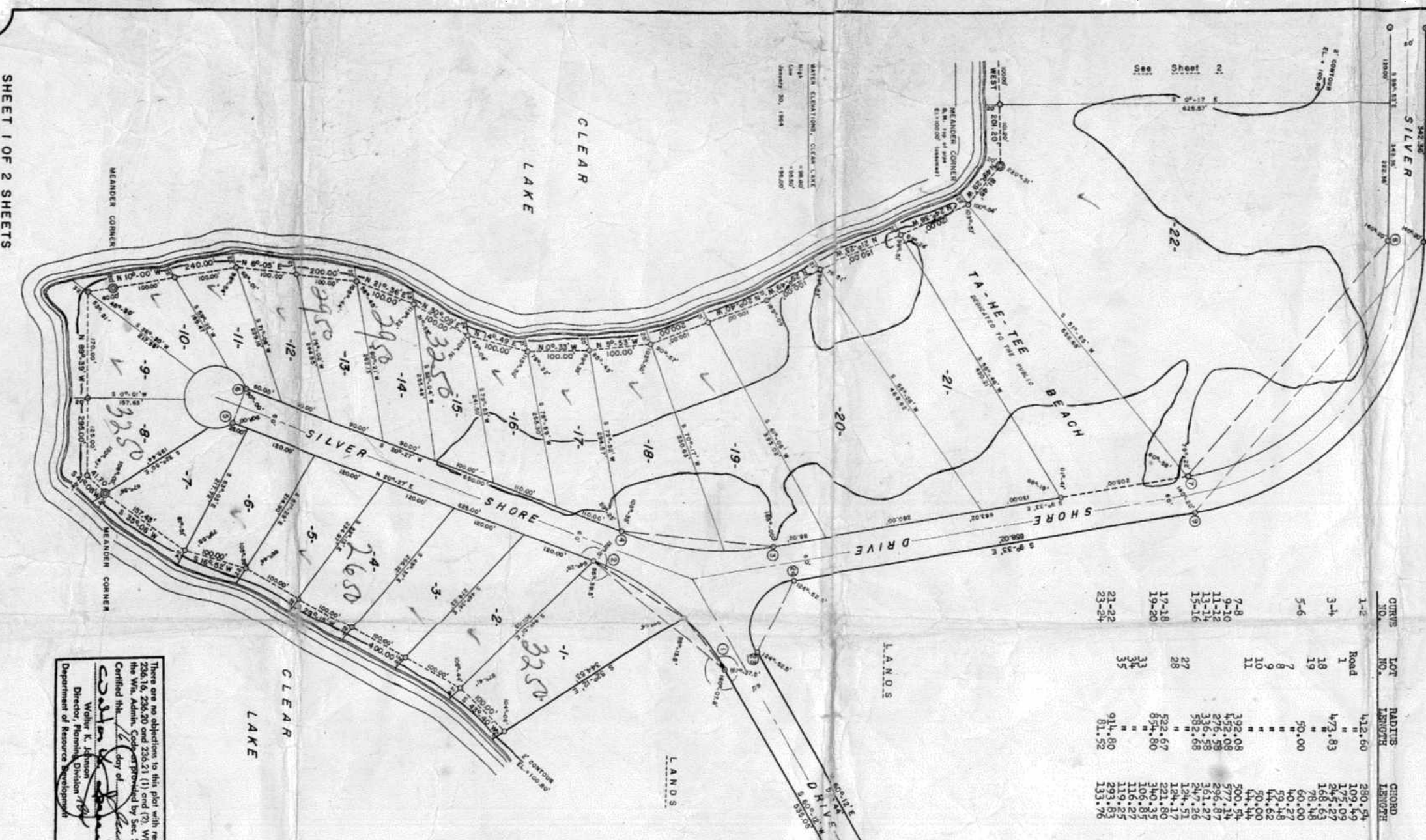


*Electric
3000 ft*

— TA - HE - TEE BEACH COLONY —

PART OF
GOV'T. LOTS 1, 2, and 3
SECTION 13
AND
GOV'T. LOT 1, SECTION 24
T 39 N, R 8 E
ONEIDA COUNTY, WIS.

CURVE NO.	LOT NO.	RADIUS LENGTH	CHORD LENGTH	CURVE DATA TABLE		CENTRAL ANGLE	TANGENT BEARING
				CHORD BEARING	CHORD BEARING		
1-2	Road	412.60	280.24	8.40°-19.51' W.	8.40°-19.51' W.	139° 45'	
3-4	1	473.83	109.49	8.52°-34.51' W.	8.52°-34.51' W.	139° 15'	
5-6	18	50.00	173.09	8.52°-42.51' W.	8.52°-42.51' W.	134° 30'	
7-8	19	50.00	168.63	8.52°-49.51' W.	8.52°-49.51' W.	130° 00'	
9-10	7	50.00	60.00	8.52°-56.51' W.	8.52°-56.51' W.	125° 30'	
11-12	8	50.00	50.00	8.52°-63.51' W.	8.52°-63.51' W.	121° 15'	
13-14	9	50.00	41.44	8.52°-70.51' W.	8.52°-70.51' W.	117° 00'	
15-16	10	50.00	33.88	8.52°-77.51' W.	8.52°-77.51' W.	112° 45'	
17-18	11	50.00	26.32	8.52°-84.51' W.	8.52°-84.51' W.	108° 30'	
19-20	27	522.67	577.14	8.52°-91.51' W.	8.52°-91.51' W.	104° 15'	
21-22	33	522.67	296.87	8.52°-98.51' W.	8.52°-98.51' W.	100° 00'	
23-24	34	336.58	361.27	8.52°-105.51' W.	8.52°-105.51' W.	95° 45'	
	35	582.68	247.24	8.52°-112.51' W.	8.52°-112.51' W.	91° 30'	
		914.80	124.51	8.52°-119.51' W.	8.52°-119.51' W.	87° 15'	
		81.52	133.76	8.52°-126.51' W.	8.52°-126.51' W.	83° 00'	



There are no objections to this plat with respect to Secs. 236.15, 236.16, 236.20 and 236.21 (1) and (2), Wis. Stat., and H 63 of the Wis. Admin. Code as provided by Sec. 236.12 (6), Wis. Stat., Certified this 19th day of August, 1964.
Walter K. Johnson
 Director, Planning Division
 Department of Resource Development

